

Job: _____ **Engineer:** _____
Location: _____ **Architect:** _____
Schedule No.: _____ **Date:** _____
System Designation: _____ **For:** ☐Reference ☐Approval ☐Review ☐Construction

FEATURES

- DC Inverter Compressor Technology
- DC Condensing unit Motor
- Automatic start
- Compact Design
- Wired Control Included
- Washable filter
- Water Pump Included
- 9 level static pressure mode

CTGF18188A-S

SPECIFICATION

Internal Unit

PERFORMANCE

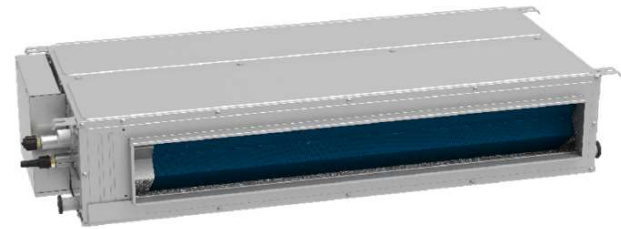
Air Flow	Turbo	559	CFM
	High	518	
	Medium	483	
	Low	412	
External Static Pressure	Rated	25	Pa
	Range	0 - 75	Pa
Sound Pressure Level	Turbo	40	Pa
	High	39	
	Medium	37	
	Low	35	

ELECTRICAL DATA

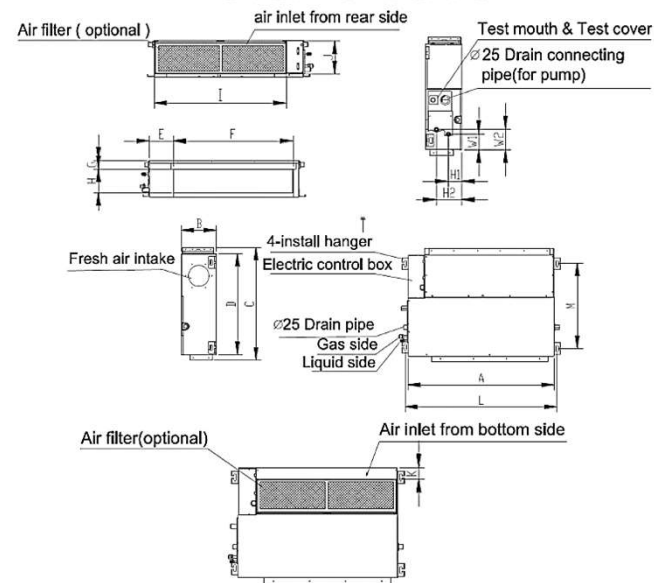
Voltage	220-240/1/50-60	(V/Ph/H z)
Current FLA	0.63	Amp
Power Input	80	Watts

DIMENSIONS

Net Dimensions	7.9 x 39.4 x 17.7		inch
	200 x 1,000 x 450		mm
Weight	Net	57.2	Lbs
		25.9	Kg
	Load	68.2	Lbs
		30.9	Kg
Connection Pipe	Liquid	1/4"	inch
	Gas	1/2"	inch
Connection Pipe distance	Max Distance	35	mts
		98.4	Feet
	Max Height	20	mts
		56.2	Feet



CTGF18188A-S



CTGF18168A-S

Dimmension	mm	inch
A	1,060	41.7
B	415	16.3
C	1,000	39.4
D	200	7.9
E	450	17.7
F	474	18.7
G	1,068	42.0

OPTIONAL ACCESSORIES

Wired Thermostat (included)

Job:	Engineer:
Location:	Architect:
Schedule No.:	Date:
System Designation:	For: <input type="checkbox"/> Reference <input type="checkbox"/> Approval <input type="checkbox"/> Review <input type="checkbox"/> Construction

FEATURES

- DC Inverter Compressor Technology
- DC Condensing unit Motor
- Automatic start
- Compact Design
- Wired Control Included
- Washable filter
- Water Pump Included
- 9 level static pressure mode

CTG018188A-S

SPECIFICATION

External Unit

PERFORMANCE

Nominal Cooling Capacity		18,000	Btu/h
	EER	3.12	W/W
	SEER	16	(Btu/h)/W
Nominal Heating Capacity		19,700	Btu/h
	HSPF	9	
Air Flow		1,766	CFM
Operation Range	Cooling	5°F - 118°F	°F
		-15°C - 48°C	°C
	Heating	5°F - 75°F	°F
		-15°C - 24°C	°C

ELECTRICAL DATA

Voltage	220-240/1/50-	(V/Ph/H z)
Motor FLA	0.49	Amps
Compressor (RLA)	6.5	Amps
# Compressor	1	

GENERAL DATA

% Connection	100	%
Maximun Internal Units	1	
Sound Pressure Level	55	dBA
Refrigerant	R410A	
Factory Refrigerant Charge	2.75	Lbs
	44.1	Oz

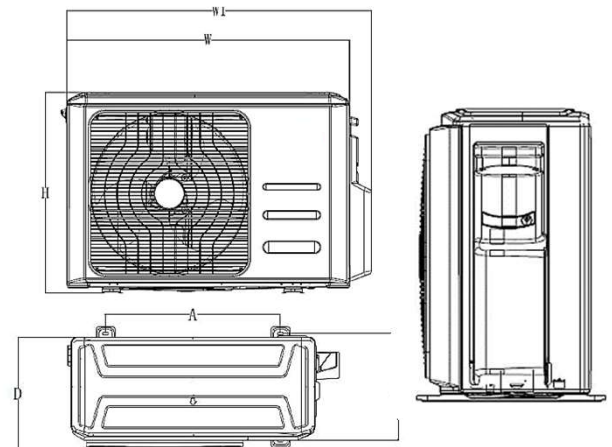
DIMMENSIONS

Net Dimmensions		23.5 x 32.2 x 11.9	inch
		596 x 810 x 302	mm
Weight	Net	90.4	Lbs
		41.0	Kg
	Load	97.0	Lbs
		44.0	Kg



CTG018168A-S

DIMENSIONAL DRAWINGS - INCHES (MM)



CTG018168A-S

Dimmension	mm	inch
A	818	32.2
B	378	14.9
C	596	23.5
D	550	21.7
E	348	13.7
F	887	34.9
G	302	11.9

OPTIONAL ACCESSORIES

Wired Thermostat (included)

Note – Due to Comfort Time ongoing commitment to quality, specifications, ratings and dimensions are subject to change without notice and without incurring liability. Improper installation, adjustment, alteration, service, Maintenance and operation may cause properly damage on personal injury. Installation, service and operation must be performed by a qualified installer, servicing and operation agency.