

Job: _____ **Engineer:** _____
Location: _____ **Architect:** _____
Schedule No.: _____ **Date:** _____
System Designation: _____ **For:** ☐Reference ☐Approval ☐Review ☐Construction

FEATURES

- DC Inverter Compressor Technology
- DC Condensing unit Motor
- Automatic start
- Compact Design
- Wired Control Included
- Washable filter
- Water Pump Included
- 9 level static pressure mode

CTGF24188A-S

SPECIFICATION

Internal Unit

PERFORMANCE

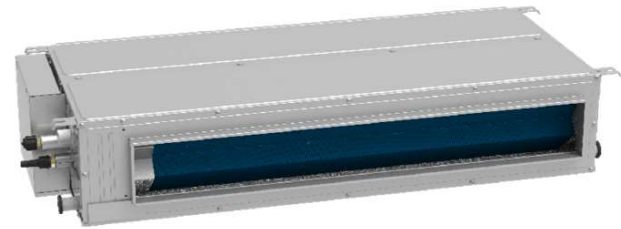
Air Flow	Turbo		CFM
	High	820	
	Medium	620	
	Low	520	
External Static Pressure	Rated	25	Pa
	Range	0 - 150	Pa
Sound Pressure Level	Turbo		Pa
	High	53	
	Medium	58	
	Low	43	

ELECTRICAL DATA

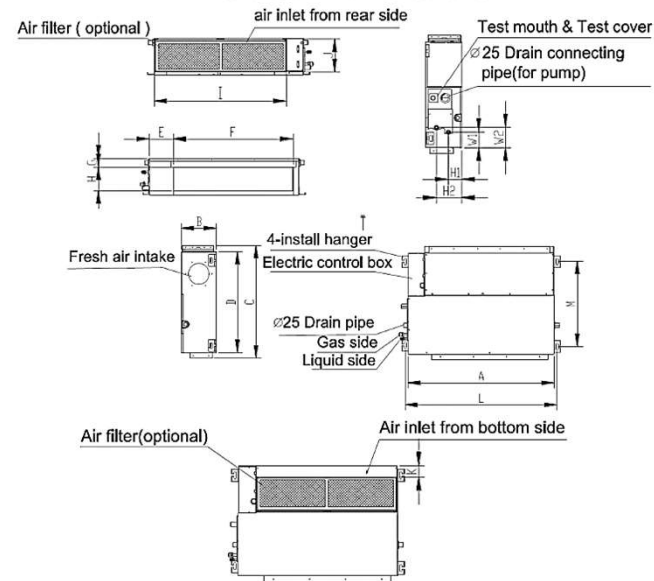
Voltage	220-240/1/50-60	(V/Ph/Hz)
Current FLA	2	Amp
Power Input	160	Watts

DIMENSIONS

Net Dimensions		9.8 x 43.3 x 30.5	inch
		250 x 1100 x 775	mm
Weight	Net	87	Lbs
		39.5	Kg
	Load	103	Lbs
		46.7	Kg
Connection Pipe	Liquid	3/8"	inch
	Gas	5/8"	inch
Connection Pipe distance	Max Distance	20	mts
		65	Feet
	Max Height	20	mts
		44	Feet



CTGF24188A-S



CTGF24188A-S

IDU	UNIT	A	B	C	D	E	F	G	H	I	J	K	L	M	H1	H2	W1	W2
24K	mm	1100	249	774	700	140	928	50	175	1001	228	5	1140	586	80	150	130	155
	Inch	43.3	9.8	30.5	27.6	5.5	36.5	2.0	6.9	39.4	9.0	0.2	44.9	23.5	3.1	5.9	5.1	6.1

OPTIONAL ACCESSORIES

Wired Thermostat (included)

Note – Due to Comfort Time ongoing commitment to quality, specifications, ratings and dimensions are subject to change without notice and without incurring liability. Improper installation, adjustment, alteration, service, Maintenance and operation may cause properly damage on personal injury. Installation, service and operation must be performed by a qualified installer, servicing and operation agency.

Job:	Engineer:
Location:	Architect:
Schedule No.:	Date:
System Designation:	For: <input type="checkbox"/> Reference <input type="checkbox"/> Approval <input type="checkbox"/> Review <input type="checkbox"/> Construction

FEATURES

- DC Inverter Compressor Technology
- DC Condensing unit Motor
- Automatic start
- Compact Design
- Wired Control Included
- Washable filter
- Water Pump Included
- 9 level static pressure mode

CTG024188A-S

SPECIFICATION

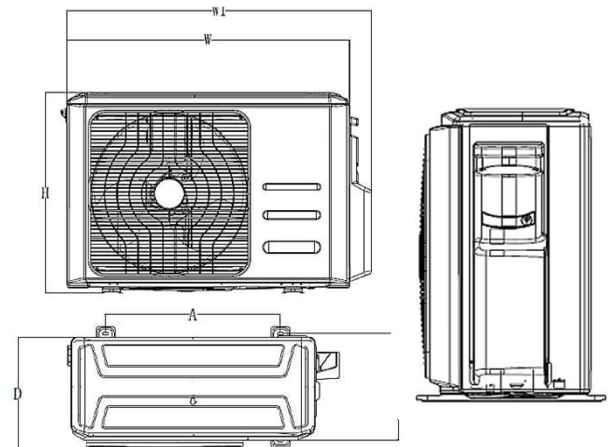
External Unit

PERFORMANCE			
Nominal Cooling Capacity		24,000	Btu/h
	EER	3.66	W/W
	SEER	20	(Btu/h)/W
Nominal Heating Capacity		24,400	Btu/h
	HSPF	10.5	
Air Flow		2,354	CFM
Operation Range	Cooling	5°F - 122°F	°F
		-15°C - 50°C	°C
	Heating	5°F - 86°F	°F
		-15°C - 30°C	°C
ELECTRICAL DATA			
Voltage		220-240/1/50-60	(V/Ph/Hz)
Motor FLA		0.6	Amps
Compressor (RLA)		12	Amps
# Compressor		1	
GENERAL DATA			
% Connection		100	%
Maximun Internal Units		1	
Sound Pressure Level		61	dBa
Refrigerant		R410A	
Factory Refrigerant Charge		5.18	Lbs
		82.9	Oz
DIMMENSIONS			
Net Dimmensions		31.9 x 37.2 x 16.1	inch
		810 x 945 x 409	mm
Weight	Net	136.7	Lbs
		62.0	Kg
	Load	148.6	Lbs
		67.4	Kg



CTG024168A-S

DIMENSIONAL DRAWINGS - INCHES (MM)



CTG024168A-S

ODU	Inch	mm
W	37.2	946
D	16.1	410
H	31.9	810
W1	40.6	1030
A	26.5	673
B	15.9	403

OPTIONAL ACCESSORIES

Wired Thermostat (included)

Note – Due to Comfort Time ongoing commitment to quality, specifications, ratings and dimensions are subject to change without notice and without incurring liability. Improper installation, adjustment, alteration, service, Maintenance and operation may cause properly damage on personal injury. Installation, service and operation must be performed by a qualified installer, servicing and operation agency.