

Job: _____ **Engineer:** _____
Location: _____ **Architect:** _____
Schedule No.: _____ **Date:** _____
System Designation: _____ **For:** ☐Reference ☐Approval ☐Review ☐Construction

FEATURES

- DC Inverter Compressor Technology
- DC Condensing unit Motor
- Automatic start
- Compact Design
- Wired Control Included
- Washable filter
- Water Pump Included
- 9 level static pressure mode

CTGF36188A-S

SPECIFICATION

Internal Unit

PERFORMANCE

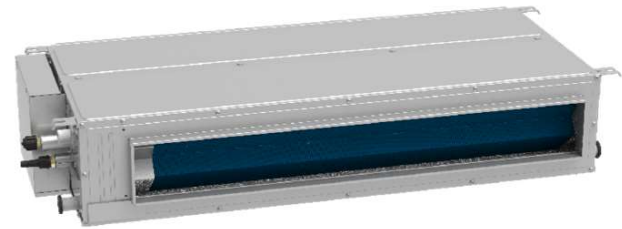
Air Flow	Turbo		CFM
	High	1,120	
	Medium	940	
	Low	680	
External Static Pressure	Rated	37	Pa
	Range	0 - 150	Pa
Sound Pressure Level	Turbo		Pa
	High	53	
	Medium	51	
	Low	47	

ELECTRICAL DATA

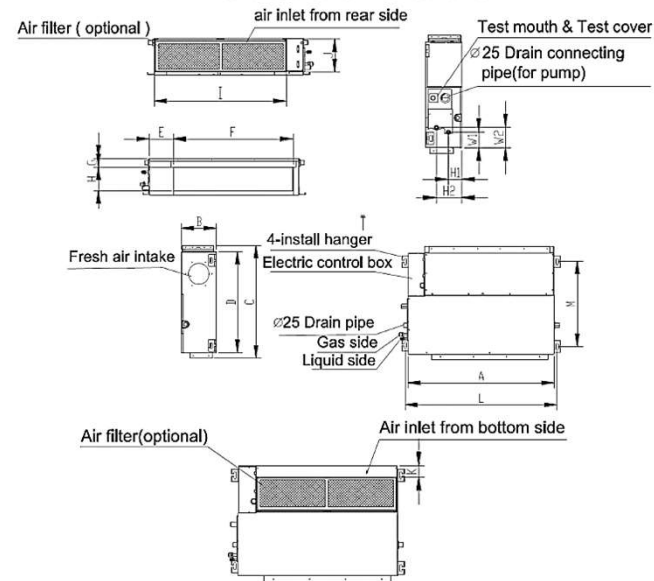
Voltage	220-240/1/50-60	(V/Ph/Hz)
Current FLA	1.5	Amp
Power Input	300	Watts

DIMENSIONS

Net Dimensions		9.8 x 53.5 x 30.5	inch
		250 x 1,360 x 700	mm
Weight	Net	118.7	Lbs
		53.8	Kg
	Load	141.8	Lbs
		64.3	Kg
Connection Pipe	Liquid	3/8"	inch
	Gas	5/8"	inch
Connection Pipe distance	Max Distance	20	mts
		65	Feet
	Max Height	20	mts
		44	Feet



CTGF36188A-S



CTGF36188A-S

UNIT	A	B	C	D	E	F	G	H	I	J	K	L	M	H1	H2	W1	W2
mm	1360	249	774	700	140	1186	50	175	1261	228	5	1400	608	80	150	130	155
inch	53.5	9.8	30.5	27.6	5.5	46.7	2.0	6.9	49.6	9.0	0.2	55.1	23.5	3.1	5.9	5.1	6.1

OPTIONAL ACCESSORIES

Wired Thermostat (included)

Note – Due to Comfort Time ongoing commitment to quality, specifications, ratings and dimensions are subject to change without notice and without incurring liability. Improper installation, adjustment, alteration, service, Maintenance and operation may cause properly damage on personal injury. Installation, service and operation must be performed by a qualified installer, servicing and operation agency.

Job:	Engineer:
Location:	Architect:
Schedule No.:	Date:
System Designation:	For: <input type="checkbox"/> Reference <input type="checkbox"/> Approval <input type="checkbox"/> Review <input type="checkbox"/> Construction

FEATURES

- DC Inverter Compressor Technology
- DC Condensing unit Motor
- Automatic start
- Compact Design
- Wired Control Included
- Washable filter
- Water Pump Included
- 9 level static pressure mode

CTG036188A-S

SPECIFICATION

External Unit

PERFORMANCE

Nominal Cooling Capacity		36,000	Btu/h
	EER	2.49	W/W
	SEER	16.5	(Btu/h)/W
Nominal Heating Capacity		38,000	Btu/h
	HSPF	10.5	
Air Flow		2,530	CFM
Operation Range	Cooling	5°F - 122°F	°F
		-15°C - 50°C	°C
	Heating	5°F - 86°F	°F
		-15°C - 30°C	°C

ELECTRICAL DATA

Voltage	220-240/1/50-60	(V/Ph/Hz)
Motor FLA	1	Amps
Compressor (RLA)	22	Amps
# Compressor	1	

GENERAL DATA

% Connection	100	%
Maximun Internal Units	1	
Sound Pressure Level	66	dba
Refrigerant	R410A	
Factory Refrigerant Charge	6.75	Lbs
	108	Oz

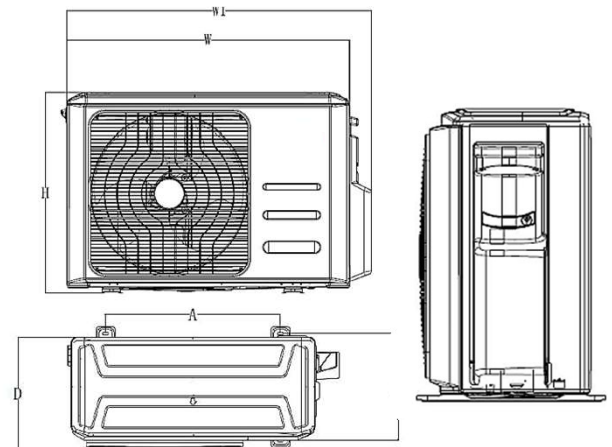
DIMMENSIONS

Net Dimmensions		31.9 x 37.2 x 16.1	inch
		810 x 945 x 409	mm
Weight	Net	148.6	Lbs
		67.4	Kg
	Load	160.9	Lbs
		73.0	Kg



CTG036188A-S

DIMENSIONAL DRAWINGS - INCHES (MM)



CTG036188A-S

ODU	Inch	mm
W	37.2	946
D	16.1	410
H	31.9	810
W1	40.6	1030
A	26.5	673
B	15.9	403

OPTIONAL ACCESSORIES

Wired Thermostat (included)

Note – Due to Comfort Time ongoing commitment to quality, specifications, ratings and dimensions are subject to change without notice and without incurring liability. Improper installation, adjustment, alteration, service, Maintenance and operation may cause properly damage on personal injury. Installation, service and operation must be performed by a qualified installer, servicing and operation agency.