

Job: _____ **Engineer:** _____
Location: _____ **Architect:** _____
Schedule No.: _____ **Date:** _____
System Designation: _____ **For:** ☐Reference ☐Approval ☐Review ☐Construction

FEATURES

- DC Inverter Compressor Technology
- DC Condensing unit Motor
- Automatic start
- Compact Design
- Wired Control Included
- Washable filter
- Water Pump Included
- 9 level static pressure mode

CTGF48188A-S

SPECIFICATION

Internal Unit

PERFORMANCE

Air Flow	Turbo	1,177	CFM
	High	1,059	
	Medium	942	
	Low	824	
External Static Pressure	Rated	50	Pa
	Range	0 - 150	Pa
Sound Pressure Level	Turbo	42	Pa
	High	40	
	Medium	39	
	Low	37	

ELECTRICAL DATA

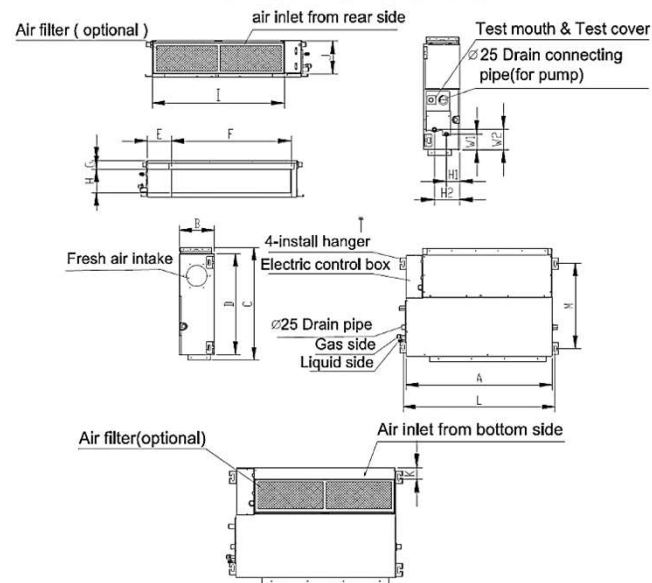
Voltage	220-240/1/50-	(V/Ph/H z)
Current FLA	60	Amp
Power Input	1.26	Watts

DIMENSIONS

Net Dimensions		11.8 x 55.1 x 27.6	inch
		300 x 1,400 x 700	mm
Weight	Net	110.3	Lbs
		50.0	Kg
	Load	123.2	Lbs
		55.9	Kg
Connection Pipe	Liquid	3/8"	inch
	Gas	5/8"	inch
Connection Pipe distance	Max Distance	75	mts
		229.6	Feet
	Max Height	30	mts
		98.4	Feet



CTGF48188A-S



OPTIONAL ACCESSORIES

Wired Thermostat (included)

Job:	Engineer:
Location:	Architect:
Schedule No.:	Date:
System Designation:	For: <input type="checkbox"/> Reference <input type="checkbox"/> Approval <input type="checkbox"/> Review <input type="checkbox"/> Construction

FEATURES

- DC Inverter Compressor Technology
- DC Condensing unit Motor
- Automatic start
- Compact Design
- Wired Control Included
- Washable filter
- Water Pump Included
- 9 level static pressure mode

CTG048188A-S

SPECIFICATION

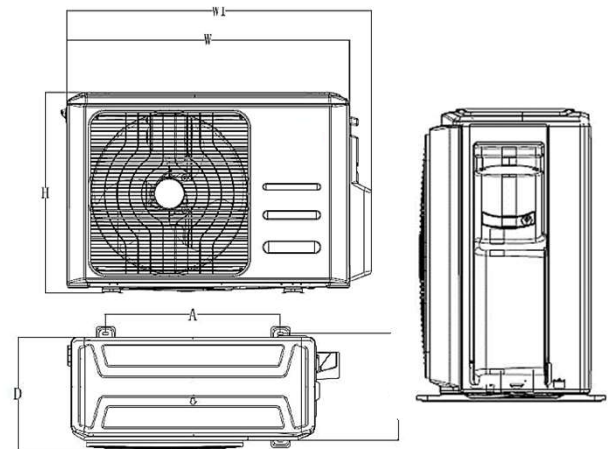
External Unit

PERFORMANCE			
Nominal Cooling Capacity		47,800	Btu/h
	EER	2.8	W/W
	SEER	16	(Btu/h)/W
Nominal Heating Capacity		51,200	Btu/h
	HSPF	9	
Air Flow		3,472	CFM
Operation Range	Cooling	5°F - 118°F	°F
		-15°C - 48°C	°C
	Heating	5°F - 75°F	°F
		-15°C - 24°C	°C
ELECTRICAL DATA			
Voltage		220-240/1/50-60	(V/Ph/H z)
Motor FLA		1.38	Amps
Compressor (RLA)		19.7	Amps
# Compressor		1	
GENERAL DATA			
% Connection		100	%
Maximun Internal Units		1	
Sound Pressure Level		59	dBA
Refrigerant		R410A	
Factory Refrigerant Charge		8.14	Lbs
		130.24	Oz
DIMMENSIONS			
Net Dimmensions		32.3 x 37 x 18.1	inch
		820 x 940 x 460	mm
Weight	Net	134.2	Lbs
		60.9	Kg
	Load	145.2	Lbs
		65.9	Kg



CTG048168A-S

DIMENSIONAL DRAWINGS - INCHES (MM)



OPTIONAL ACCESSORIES

Wired Thermostat (included)

Note – Due to Comfort Time ongoing commitment to quality, specifications, ratings and dimensions are subject to change without notice and without incurring liability. Improper installation, adjustment, alteration, service, Maintenance and operation may cause properly damage on personal injury. Installation, service and operation must be performed by a qualified installer, servicing and operation agency.