

Job: _____ **Engineer:** _____
Location: _____ **Architect:** _____
Schedule No.: _____ **Date:** _____
System Designation: _____ **For:** ☐Reference ☐Approval ☐Review ☐Construction

FEATURES

- All DC Inverter Technology
- Floating Evaporating Temperature
- Multi Silent Mode
- Back Up Operation
- Selectable High ESP (Optional)
- Wide Application Range
- Capacity Output Limitation
- Multi Priority Mode
- Auto Dust Cleaning (Optional)
- Anti-corrosion Protection (Optional)
- Auto Addressing
- Intelligent Duty Cycle Operation
- Real-time Refrigerant Amount Monitoring
- Auto Refrigerant Charging (Optional)

SPECIFICATIONS

PERFORMANCE

	HP	20
Cooling Capacity (1)	Btu/h	191,100
	kW	56.0
EER	Btu/W*h	3.86
Power Input Cooling	kW	14.51
Heating capacity (2)	Btu/h	214,900
	kW	63.0
COP	Btu/W*h	4.12
Power Input Heating	kW	15.29

ELECTRICAL DATA

Power Supply	V/Ph/Hz	220/3/60
Minimum Circuit Ampacity	A	94
Total Over-current Amps.	A	81.4
Max Fuse Amps	A	100
Compressor RLA	A	20.3x2
No. Compressors		2
Outdoor Fan Power Input	W	440+350
Outdoor Fan FLA	A	4.0+3.4

GENERAL DATA

Connection Ratio	%	50-130%
Max Indoor Units		33
Sound Pressure Level (4)	dB(A)	63
Outdoor Fan Air Volume	m ³ /h (CFM)	16000 (9420)
Refrigerant Type		R410A
Factory refrigerant charge	Kg (Lbs)	16 (35)

DIMENSIONS

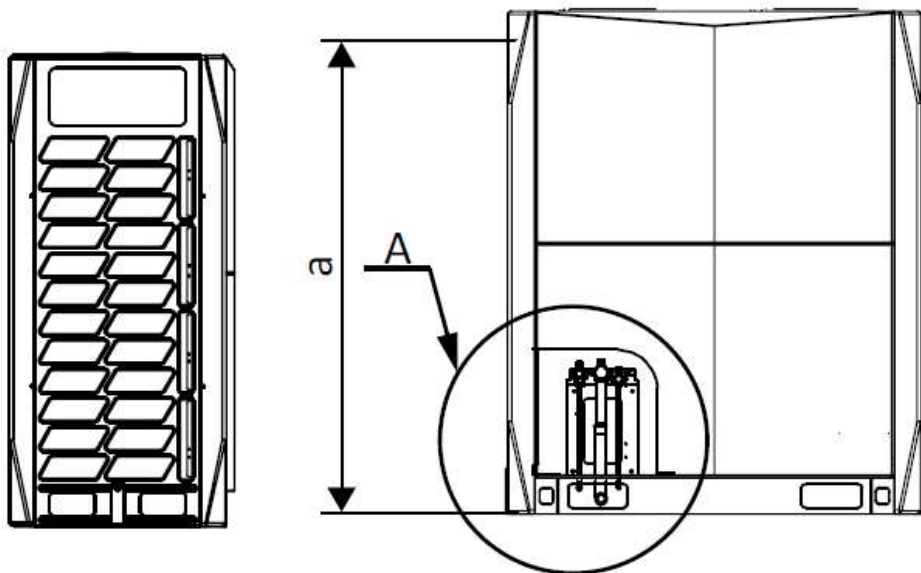
Unit Dimensions mm (inch) WxHxD	Net	1340×1635×790 (52-3/4×64-3/8×31-1/8)
	Packed	1405×1805×855 (55-3/8×71-1/16×33-5/8)
Liquid Pipe Connection (3)	mm (inch)	Φ19.1 (Φ3/4")
Gas Pipe Connection (3)	mm (inch)	Φ31.8 (Φ1-1/4")
Oil balance Pipe	mm (inch)	Φ6.35 (Φ1/4")
Net Weight	Kg (Lbs)	340 (750)
Shipping Weight	Kg (Lbs)	358 (790)



Notes:

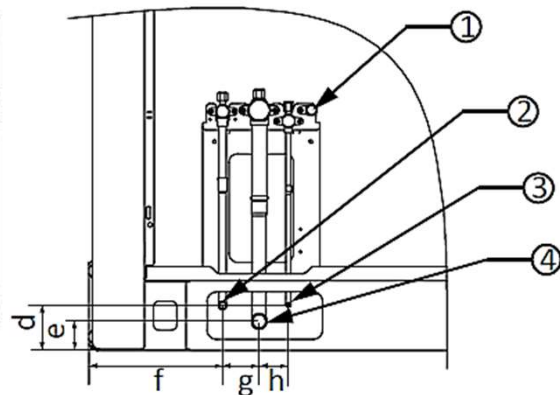
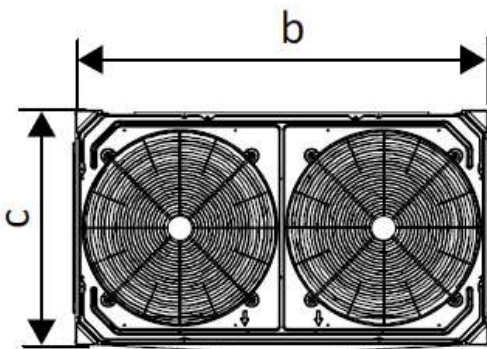
- Indoor air temperature 27°C (80.6°F) DB, 19°C (66.2°F) WB; outdoor air temperature 35°C (95.0°F) DB; equivalent refrigerant piping length 7.5m (24.6ft.) with zero level difference.
- Indoor air temperature 20°C (68.0°F) DB; outdoor air temperature 7°C (44.6°F) DB, 6°C (42.8°F) WB; equivalent refrigerant piping length 7.5m (24.6ft.) with zero level difference.
- Diameters given are those of the unit's stop valve.
- Sound pressure level is measured at a position 1m (3.28ft.) in front of the unit and 1.3m (4.26ft.) above the floor in a semi-anechoic chamber.

DIMENSIONAL DRAWINGS - INCHES (MM)



Dimensions (unit: mm (in.))

a	1635 (64-3/8)
b	1340 (52-3/4)
c	790 (31-1/8)
d	77 (3-1/32)
e	50 (1-15/16)
f	244 (9-5/8)
g	63 (2-1/2)
h	50 (1-15/16)



Detail A

Legend

No.	Parts name	Remarks
1	Check Ports	The check port is used to measure systems pressure, charge refrigerant and vacuumize the system.
2	Liquid Pipe connection Port	Φ15.9mm (Φ5/8in.) brazed connection on CTVS-EMO-H-137-E-CE-DC-1 and CTVS-EMO-H-154-E-CE-DC-1 Φ19.1mm (Φ3/4in.) brazed connection on CTVS-EMO-H-171-E-CE-DC-1, CTVS-EMO-H-191-E-CE-DC-1 and CTVS-EMO-H-210-E-CE-DC-1
3	Oil balance connection Port	The oil balance pipe runs between outdoor units. Φ8mm (Φ5/16in.) brazed connection.
4	Gas Pipe connection Port	Φ31.8mm (Φ1-1/4in.) brazed connection on CTVS-EMO-H-137-E-CE-DC-1, CTVS-EMO-H-154-E-CE-DC-1, CTVS-EMO-H-171-E-CE-DC-1, CTVS-EMO-H-191-E-CE-DC-1 and CTVS-EMO-H-210-E-CE-DC-1